

# HABBAU GROUP



**As an international full-service provider for practically all performance areas of construction, the HABAU GROUP lives by the principles of the utmost quality, innovation and durability. We accompany projects from constructive planning all the way to efficient implementation. Tradition, experience and passion for our projects are our driving force at all times. We live and breathe our trade. And we've been doing so for over 110 years.**

04	INTERVIEW WITH THE MANAGEMENT
08	THE SHAREHOLDERS
10	THE CONSTRUCTION FAMILY
12	COMPANY HISTORY
14	ORGANISATIONAL CHART
16	COMPANIES IN THE HABAU GROUP
20	SCOPE OF SERVICES
22	CONSTRUCTION OUTPUT AND EMPLOYEES
26	FUNDAMENTAL VALUES & HUMAN RESOURCES
34	SUSTAINABILITY
36	STRUCTURAL ENGINEERING
42	CIVIL ENGINEERING
48	PIPELINE CONSTRUCTION
54	UNDERGROUND CONSTRUCTION OPERATIONS
60	STEEL CONSTRUCTION & STEEL PLANT CONSTRUCTION
66	PREFABRICATED CONSTRUCTION
72	TIMBER CONSTRUCTION

## The DNA of the HABAU GROUP

**One group, 15 companies – and all of them built upon innovation and sustainability. With passion as the foundation. Behind it all is a clear intention: exceptional performance.**

**Hubert Wetschnig and Michael Mayer-Schütz are the managing directors of the HABAU GROUP. In an interview, they speak about principles and values, goals and the construction family's contribution to society.**



“We stand for **performance in construction. Reliability, partnership and integrity** are the essential values that we uphold.”

HUBERT WETSCHNIG



**What does the HABAU GROUP stand for?**

HUBERT WETSCHNIG // We are a construction family, a group of companies that has been family-owned for many decades. All of our group companies operate in their specialist fields within the regions in which they are firmly rooted, and from there they are constantly tapping into new business segments and markets. We stand for performance in construction. Reliability, partnership and integrity are the essential values that we uphold.

MICHAEL MAYER-SCHÜTZ // In addition to quality, we also care very much about the topics of innovation and sustainability. We're constantly reinventing both ourselves and building techniques to

obtain results that make an impression. Our HABAU GROUP companies are absolute specialists in their respective fields. They make optimum use of their synergies to ensure that each of our customers' building projects comes from a single source and is a success. So with us, one plus one makes more than two.

**In what ways is it evident to clients that the HABAU GROUP has its origins in a family-run business?**

MICHAEL MAYER-SCHÜTZ // At the HABAU GROUP, people are at the centre. It's important to have high-level specialists. And we certainly do. But in our Group, there's a community spirit. This is precisely what makes a major difference for our clients.

„We are, after all, **a construction family, and this is reflected in our daily work.**“

MICHAEL MAYER-SCHÜTZ



# part of

HUBERT WETSCHNIG // Because of our history, we think in generations. For us, the question of how we can adopt responsible practices is pivotal. Our answer to this: quality that lasts for decades and is therefore sustainable.

**How important is the role played by the employees of the HABAU GROUP?**

MICHAEL MAYER-SCHÜTZ // Many families work as colleagues here with us – in some cases across three generations. We are, after all, a construction family, and this is reflected in our daily work. We are very aware that alongside technical skills, social skills are just as important. This is why fluctuation is very low in general with us.

HUBERT WETSCHNIG // Our colleagues will only remain in the company in the long term if they feel at ease. Making sure that they do requires active appreciation, fair, performance-based pay and respectful interactions with one another. These are clear components of our culture. In addition to this, the size of our company means that we offer a great deal of opportunities for further development. All of these things form the foundation that allows us to ensure the best possible service for our clients.

**What goals are you pursuing for the HABAU GROUP?**

MICHAEL MAYER-SCHÜTZ // Over the past ten years, we've demonstrated solid and healthy growth. We want to continue along this successful path in the future while also maintaining our down-to-earth character. In the German market in particular, we can see major opportunities for our corporate group, and we are confident that we'll be able to seize these opportunities with our strategic acquisitions.

HUBERT WETSCHNIG // As in past years, we at the HABAU GROUP want to continue our successful work. To do so, it is important that we raise our company profile and expand our spectrum of services. When it comes to innovation and sustainability, we have already taken on a pioneering role. My vision is to continue developing the synergies of our group companies, thus becoming even stronger as a corporate group overall.

# the family

**Three generations, over 110 years of experience and not a hint of stagnation in sight – this is what characterises the HABAU GROUP. The company has been family-owned since 1913, and this is precisely what gives it its strength.**

Building something for the generations to come. Thanks to our origins as a family company, this is one of our biggest aspirations. “By doing so, we guarantee that our humanity remains front and centre”, says Peter Halatschek, shareholder of the HABAU GROUP. Even with its major global success, one thing is for certain: the HABAU GROUP is and remains a family.

This success story goes way back. In 1913, building contractor Vinzenz Halatschek registered a construction and masonry business in Vyšší Brod (German: Hohenfurth), in the present-day Czech Republic. Firmly rooted in the region – in this case, this applies to more than just the company values. For almost 100 years now, the business has had its headquarters in Perg, Upper Austria. This is where the HABAU GROUP as it is known today really took shape: always one step ahead and with total commitment. From novel machinery and innovative building techniques to customised controlling, everything stems from the same family-run source.

At the HABAU GROUP, the concept of family goes a step further: the performance of all employees is what carries the company. Georgine Rumpler-Heindl emphasizes: “We represent outstanding quality in the implementation of construction projects – since our establishment.” Everyone involved pulls together to create the best work environment, one that will turn customers’ wishes into a reality and ensure that the HABAU GROUP can continue to operate successfully on an international scale.

“We represent **outstanding quality** in the implementation of construction projects – **since our establishment.**”

MAG. GEORGINE RUMPLER-HEINDL



“We **guarantee**, that our **humanity remains front and centre.**”

ING. MAG. PETER HALATSCHEK MBA

## Passing on the passion

**Consistency, reliability and solidarity. This is what we as a company stand for. And we uphold these values from generation to generation. It's not only our family that has found its place in the HABAU GROUP, but many others too.**

"For me, the HABAU GROUP's description as a 'family business' is well-deserved – nobody is just a personnel number here", says Patrick Fiedler. He is an apprentice in the business segment of steel and formwork construction at ÖSTU-STETTIN. There, he works together with his uncle Martin Fiedler. Martin has worked for the company for 28 years. As of 2015, in his role in the staff unit he is responsible for the organisational development and quality management of the executive board. What keeps a person in one place for so long and is even capable of inspiring the next generation? The team spirit. "The humorous, comradely atmosphere with which I'm familiar from ÖSTU-STETTIN is consistent throughout the entire group", Patrick reveals. And our apprentice is a testament to the fact that working together as

**We build with generations for generations. And we've been doing so for over 100 years.**

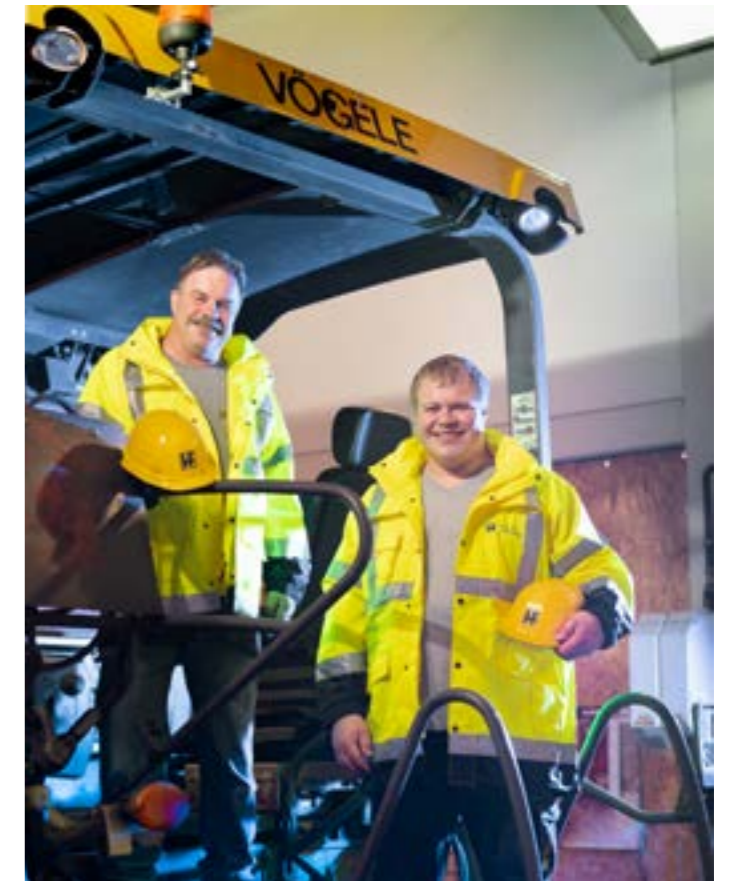
a family provides additional encouragement: "I'm always motivated to give 120 percent. But if I mess up, that reflects on the name 'Fiedler', which is why I try especially hard. In any case, value is definitely placed on learning from mistakes, and my colleagues support me in this regard." We are proud of this motivation and accomplishment. This is why we are always happy to vouch for our employees.

Following in their father's footsteps – this is true for multiple members of the Gül family. Sons Ömer and Ali have not taken the exact same professional path, but they both followed their father Yusuf to the HABAU GROUP. It all began in 1973 in Perg, when Yusuf came to us to get involved in the construction industry. His son Ali has been part of the construction family for 30 years now; today, he works as a truck driver at Fuchs Transport-Logistik. For both sons, Yusuf provided the living example that not all work is just work, but can indeed be much more. "For me it was clear that I would follow my father into the company. Thanks to him, I grew up with HABAU, which is why I always wanted to work here", Ömer tells us. Today, he works as a site manager for various pipeline projects. Yusuf Junior, Ali's son, completed an internship in the IT department of the HABAU GROUP. His conclusion: "I definitely want to apply for another internship. Everybody was incredibly friendly and helpful." The Güls are a great example of just how multifaceted one family can be. And all of this under the umbrella of the HABAU GROUP.



Brothers Ömer and Ali with son Yusuf Gül (centre). Their family has been part of HABAU since the 1970s, when father i.e. grandfather Yusuf Gül began working here.

Nephew Patrick and uncle Martin Fiedler work together as colleagues at ÖSTU-STETTIN. The former is a formwork construction apprentice; the latter works in the staff unit for organisational development and quality management.



Roland Eder and son Philipp frequently work together at the same HELD & FRANCKE construction sites.

## the construction family

## Our success story starts in ...

- 1913** — FOUNDING OF THE COMPANY
- Our story begins with Vinzenz Halatschek. In 1913, the building contractor registered a construction and masonry business in Vyšší Brod (German: Hohenfurth), in the present-day Czech Republic, thus laying the foundation for the subsequent HABAU GROUP.
- 1929** — NEW COMPANY HEADQUARTERS
- 16 years after the establishment of our company, we moved from Wolfert to Perg. To this day, the Upper Austrian municipality is home to HABAU Hoch- und Tiefbaugesellschaft mbH.
- 1950** — THE NEXT GENERATION
- Erich Halatschek, the son of our company founder Vinzenz, takes over leadership of the company and establishes the divisions of structural engineering and prefabricated construction.
- 1955** — NEW CORE BUSINESS AREAS
- Founding of Ing. E. Halatschek & Co. OHG by Erich Halatschek and brother-in-law Georg Heindl. The new core business areas include equipment rental, mechanical excavation and civil engineering.
- 1988** — LONG-TERM FUSION
- The companies Ing. E. Halatschek & Co. OHG, HABAU Baugesellschaft mbH, and Hoch- und Tiefbau Ing. E. Halatschek Baugesellschaft mbH & Co KG are being merged to form HABAU Hoch- und Tiefbaugesellschaft mbH. The two family holding companies, Halatschek and Heindl Holding are the result of this merger.
- 1989** — VENTURING ABROAD
- HABAU Hoch- und Tiefbau GmbH is opening a branch in Heringen, Deutschland. The company currently situated there, UNIVERSAL-BETON Heringen GmbH & Co KG (UBH), is being acquired.
- 2001** — ASPHALT EXPERTISE AND REGIONAL CONSTRUCTION BUSINESS
- With the purchase of HELD & FRANCKE, we expand the spectrum of construction products with the addition of asphalt expertise and achieve a greater regional presence in the majority of Austria's states.

- 2002** — ALL FROM A SINGLE SOURCE
- Thanks to the acquisition of PPS Pipeline Systems GmbH in Quakenbrück (Germany), from this point onwards we position ourselves as a full-service provider in the field of pipeline construction.
- 2007** — EXPANSION IN GERMANY
- The acquisition of HANS HOLZNER Baugesellschaft mbH in Rosenheim allows us to establish an even stronger footing in Germany.
- 2008** — THE FAMILY CONTINUES TO GROW IN AUSTRIA
- 2008 is a successful year when it comes to acquisitions: the companies ÖSTU-STETTIN, specialist in structural engineering and tunnel construction, KARL SEIDL Bau GmbH with its headquarters in Brunn am Gebirge as well as logistics experts FTL Fuchs Transport Logistik GmbH now all form part of the HABAU GROUP.
- 2016** — STEEL CONSTRUCTION FROM LINZ
- Our purchase of plant engineering experts MCE GmbH from Linz sees us expanding our portfolio with complex steel structures in the areas of bridge construction, aerospace technology and the automotive industry.
- 2022** — STYRIAN ISOLATION EXPERTISE
- In 2022, ISO-M Isoliertechnik became "part of the family". The company, located in Fohnsdorf (Styria), is active in all areas of foil sealing for building construction and civil engineering.
- 2023** — EXPANSION INTO NEIGHBOURING COUNTRY
- The German specialist company for building construction, civil engineering and pre-cast concrete structures – SCHICK – is to become part of the HABAU GROUP and will further expand our construction family.
- 2024** — THE GROWTH COURSE CONTINUES
- Our construction family is growing once again! Firstly, we're founding HABAU INFRA in order to pool our expertise in infrastructure projects. And secondly, SKI is to become part of the HABAU GROUP. We're thus expanding our portfolio with the addition of valuable competencies in the fields of corrosion and industrial building protection.

# HABAU GROUP

## Organisational chart



<sup>1</sup> external partners  
<sup>2</sup> participating interest with HELD & FRANCKE



## The HABAU GROUP companies

15 group companies and around 6,700 employees: this is the HABAU GROUP. We bring together a range of experts under one roof and always rely on experienced specialists for all our

projects. Our success speaks for itself in our annual construction output of 1.97 billion euros, putting us in the top four companies in the Austrian construction industry.

### HABAU

PERG

#### HABAU Hoch- und Tiefbaugesellschaft m.b.H

HABAU has been a thriving company for over 110 years. Family-owned since its inception and with headquarters in the Upper Austrian city of Perg, today it has grown into a full-service provider for solutions in the areas of structural and civil engineering, pipeline construction and prefabricated construction.

### HELD & FRANCKE

LINZ

#### HELD & FRANCKE Baugesellschaft m.b.H.

HELD & FRANCKE covers all branches of structural and civil engineering. One thing is particularly important to the company: customer orientation. Individual projects are carried out with a high degree of flexibility. Crucial factors in this are advanced construction methods and on-time completion.

### ÖSTU STETTIN

LEOBEN

#### ÖSTU-STETTIN Hoch- und Tiefbau GmbH

For many decades now, ÖSTU-STETTIN has led ambitious projects – both below ground and high above it. In underground construction operations, the company successfully carries out tunnel and shaft construction and mining projects. In the field of structural engineering, it realises unparalleled living and work spaces in all their different forms. The company sets store by tradition and innovation. And it does so with renewed commitment and absolute precision every single day.

### SCHICK

BAD KISSINGEN

#### ANTON SCHICK GmbH

SCHICK has an established reputation, in the German market, for performance in civil engineering, building construction, pre-cast concrete elements and industrial structures, which has been founded on enduring values, such as, customer satisfaction, meeting agreed deadlines and technical know-how.

### PPS

QUAKENBRÜCK

#### PPS Pipeline Systems GmbH

PPS combines advanced technology with efficiency in pipeline and plant construction. This results in individual solutions for each and every project. From planning and delivery to construction all the way to commissioning of the systems, PPS takes care of it all.

### MCE

LINZ

#### MCE GmbH

Complex steel structures and steel plant construction, for industrial as well as infrastructure purposes, are among MCE's strengths. Emphasis is put on keeping sight of the bigger picture. Every step, from planning to production all the way to installation and set-up, requires precision and experience. Together with its sophisticated technologies, MCE provides customised comprehensive solutions.

### HABAU

HERINGEN

#### HABAU Deutschland GmbH

At HABAU Deutschland, customer-specific solutions in combination with precision, quality and innovation take top priority. Specialised in comprehensive solutions in structural engineering and prefabricated construction, HABAU Deutschland takes on all tasks necessary for the perfect realisation of a project: from planning to production all the way to logistics and installation, the company offers a one-stop service.

### FTL

PERG

#### FUCHS Transport-Logistik GmbH

Being in the right place at the right time is FTL's speciality. The company, based in the city of Perg, is an expert in transport and logistics services for construction material, construction equipment and machinery, precast concrete parts and excavation materials.

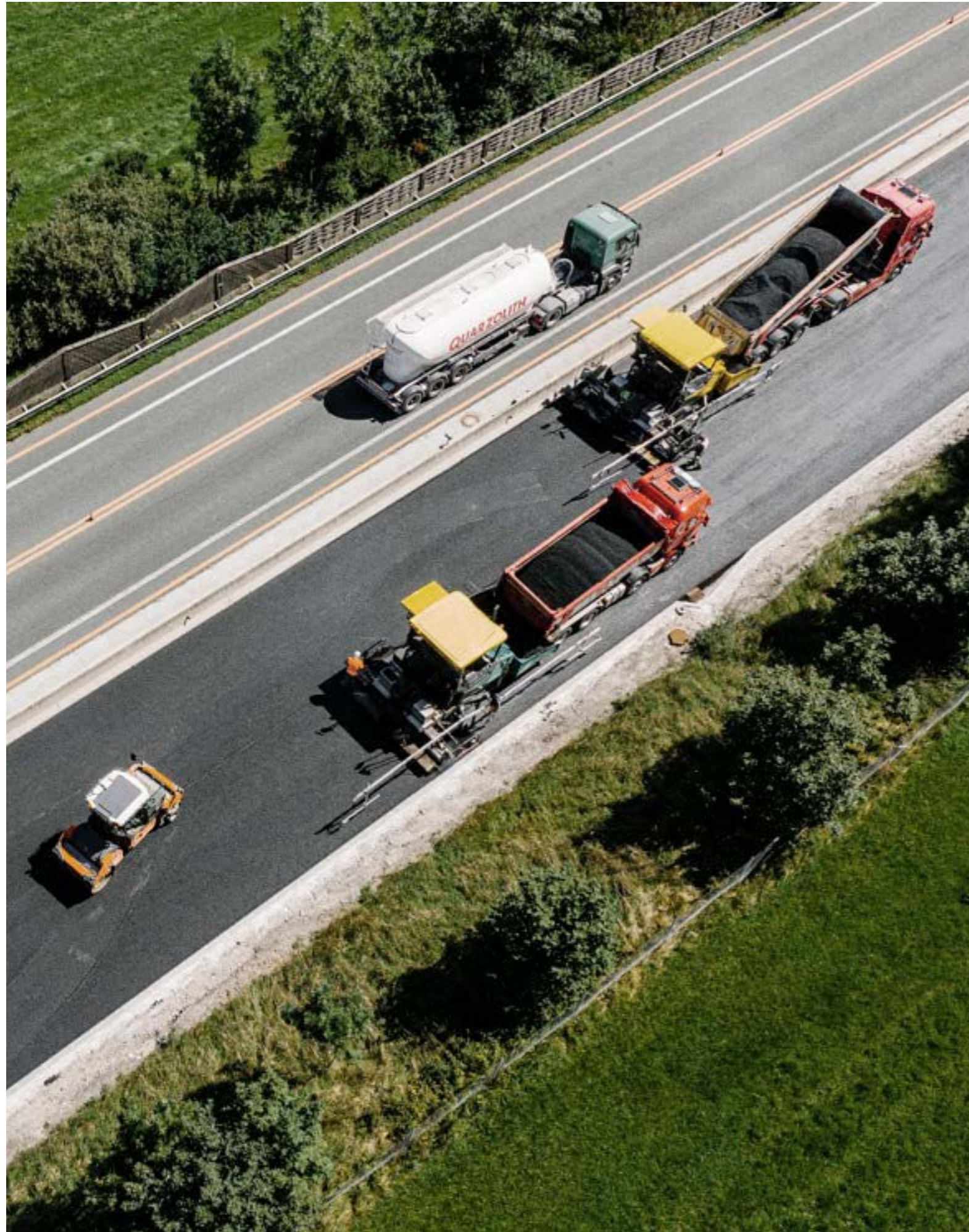
### HABAU

PLOIESTI

#### HABAU S.R.L.

In 2007, the international family of the HABAU GROUP was expanded with the addition of HABAU S.R.L. In Romania, the pipeline and plant construction company has already successfully positioned itself as a local market leader. The key to this success is innovation. This factor attracts both national as well as international clients.





HENNINGDORF

**HABAU INFRA GmbH**

With projects such as the A10/A24 Havelland Motorway near Berlin, we've realised forward-looking infrastructure and established ourselves as a reliable provider of solutions in Germany as well. As of 2024, we've been pooling our expertise in significant infrastructure projects in HABAU INFRA.



MEPPEN

**RAS Rohrleitungs- und AnlagenService GmbH**

RAS looks back on almost 30 years of experience. During this time, it has built upon its strengths in pipeline services. Excellence is the goal. And it is this aspiration that has earned it its leading market position.



PERCHTOLDSDORF

**S.K.I. Korrosions- und Industriebautenschutz GmbH**

SKI, based in Lower Austria, represents niche expertise in the areas of corrosion and fire protection as well as industrial sealing – since 1976. With its broad spectrum of services, SKI is a strong partner for plant engineering, pipe systems and steel construction, for power plant companies and for companies in the chemical, gas and oil processing industry, to name a few. With a procedure for pipeline renovation during ongoing operation, SKI is setting innovative trends.



REICHENFELS

**RAIMUND BAUMGARTNER GmbH**

RAIMUND BAUMGARTNER specialises in carpentry and timber construction works. From the town of Reichenfels to the whole of Austria and Norway. The company achieves this feat with high standards of quality and reliability.



FOHNSDORF

**ISO-M Isoliertechnik GmbH**

In 2022, ISO-M Isoliertechnik became "part of the family". The company, located in Fohnsdorf (Styria), is active in all areas of foil sealing for building construction and civil engineering.

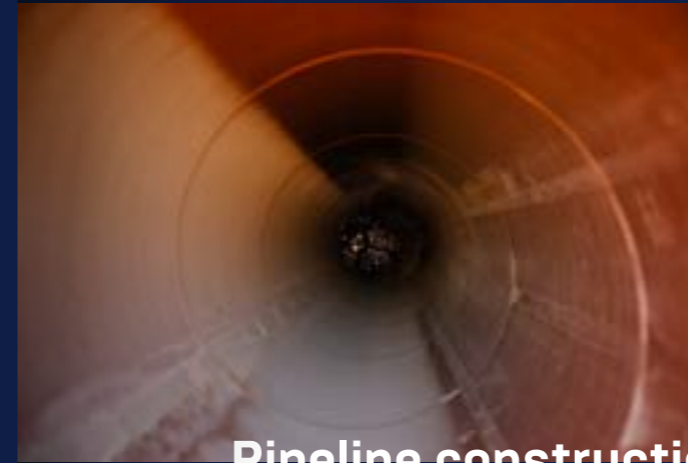


**Structural engineering**  
33.0 %



**Civil engineering**  
28.4 %

**Plant construction**  
1.0 %

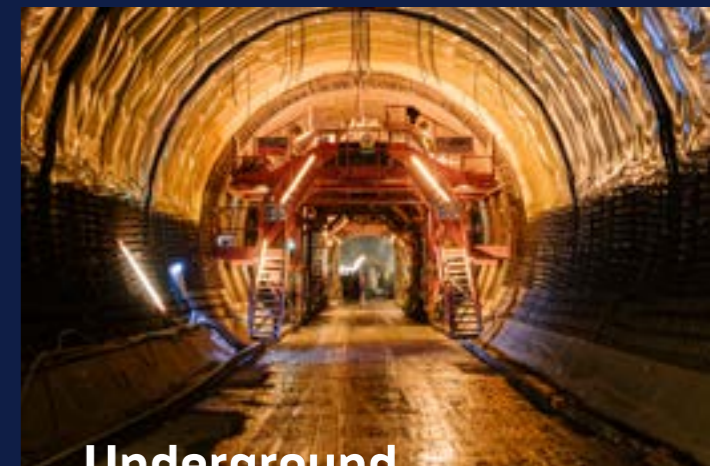


**Pipeline construction**  
18.0%



**Steel and steel plant construction**  
8.0 %

**Prefabricated construction**  
3.0 %



**Underground construction operations**  
6.5 %

**Other**  
2.1 %

## Scope of services

We build with passion. We build without limits. We build and unite structural and civil engineering, prefabricated construction, underground construction operations, pipeline, steel and steel plant as well as timber construction. We stand for value creation from a single source. Our motto: for every challenge, we have smart solutions – be it a major international project or a small-scale regional assignment. We are a well-coordinated team and have perfected our every move. It is this routine, combined with our professional expertise and decades of experience, that guarantees successful projects. What is more, we always keep pace with the times. Our methods and technologies ensure we are always one step ahead on the construction site.

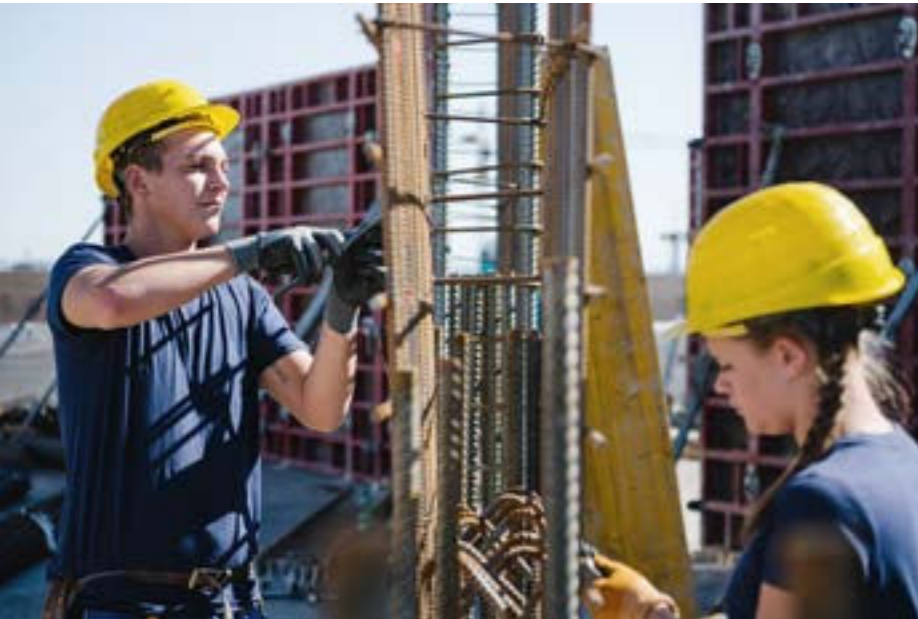
# Construction output and employees

A powerful unit: in the business year 2023/24, around 6,700 employees generated a construction output of roughly 1.97 billion euros. This puts us in the top four companies in the Austrian construction industry. Over the years, we have grown consistently and have positioned ourselves as an international full-service provider. Our expertise is in demand in many parts of the world.



■ employees  
 ■ construction output in million €





# Our fundamental values



## Strength in diversity

The best projects are nothing without outstanding execution. This requires customer orientation, integrity, solution-based thinking and sustainability to be truly lived in practice. These values form the foundation for our construction family.

The diversity of our company and our areas of performance is reflected in the diversity of our employees

themselves: multiple generations, a wide range of origins, professions and skills. This diversity makes us strong, encourages innovation and enables rapid solutions. Here with us, many find their professional home and stay loyal to the company for decades. This is also thanks to the fact that we offer meaningful tasks as well as a broad spectrum of career opportunities.

“Our **employees**  
are the **foundation**  
**of our future.**

**Together** we want  
to **expand our horizons**  
and write **stories**  
**of success.**”



## The best personnel for the highest quality

In addition to always treating each other with respect and trust, we also promote internal potential by investing in practice-oriented education and training. After all, just as we are constantly improving our trade, we also want to steadily continue to develop ourselves and our abilities.

Thousands of training days highlight the value of progress and development in our company. We place particular

emphasis on specialised training and IT training, while social skills and customer orientation are also essential topics. Company events for different target groups with specialised focal points and input from experts ensure that a lively internal exchange of ideas, learning from one another and networking take place within the company.

## Talent factory HABAU GROUP

Equal opportunity and transparency are put into practice here. Managers, executives and human resources development work in unison when it comes to identifying talent in a multi-stage process and determining the appropriate development steps together with them. Potential, passion and commitment are the key to participation here. To ensure that our managers are also

up to the tasks demanded of them at all times, we have designed programmes that are specifically tailored to them. With new tools and by sharing ideas with others, we strengthen them in their day-to-day responsibility of motivating and encouraging employees. By doing so, we ensure the groundwork for your successful construction project is already laid.





## The future of our group

A successful project depends not only on a solid plan, but above all also on the knowledge, passion and dedication of our employees. Our successes are substantially supported by our over 170 apprentices in numerous professions. Our excellent instructors and apprentice supervisors are aware of their great responsibility and perform their task with the utmost care, diligence and commitment.

Our modern apprenticeship training is based on three pillars: our expertise on construction sites, in vocational school and in the architecture academy. In addition, we also make the most of the possibilities offered by digitalisation.



The new job profiles are forward-looking and combine the best of traditional craftsmanship with cutting-edge technology. This creates a diversified training experience that keeps pace with the latest trends. Exciting apprentice seminars, sports and company events support our apprentices in developing their social skills and provide assurance and orientation for future tasks.

All those who commence an apprenticeship with us profit from numerous benefits and above-average remuneration of their performance. These include, among other things, bonuses, discounts with partner companies and offers in health care provision.









**Lake Mühlendorf dam**  
HABAU renovates the 432 metre-long structure at a height of 2,300 metres above the Adriatic sea.



We, the HABAU GROUP, act with a sense of responsibility both towards the public and internally. For a future worth living.

## Embodying responsibility, shaping the future

We are aware of our responsibility. All of our actions are guided by ethical thinking and an awareness of sustainability. For us, this means not only working in a prudent manner in the here and now, but also creating the foundation for a life worth living for future generations. We go above and beyond statutory requirements. And we do so every single day: for our clients, our employees, for the environment and for society. We build to last. Our projects are conceived with respect for our natural resources. Together we bring economy and ecology into harmony.

We are a part of society. We shape its future and do our bit to make sure it works. As an internationally active group of companies, we embrace our

social responsibility for all stakeholders. We nurture all our relationships and provide rapid help where it's needed: for example with our social fund, which offers unbureaucratic support for employees who find themselves in emergency situations. We are a family. And families stick together.

We set the highest standards when it comes to exemplary corporate management too. Our ISO 37001 and ISO 37301 certifications send a signal against corruption and anti-competitive behaviours. Integrity and fairness are the fundamental pillars of our day-to-day business.

# STRUCTURAL ENGINEERING

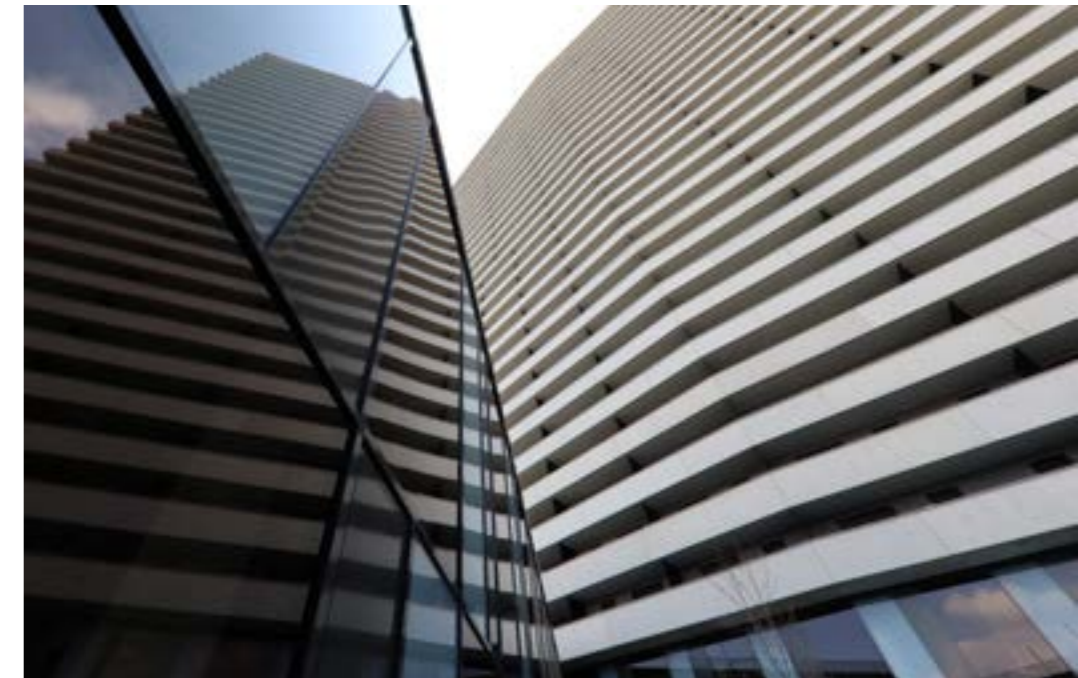
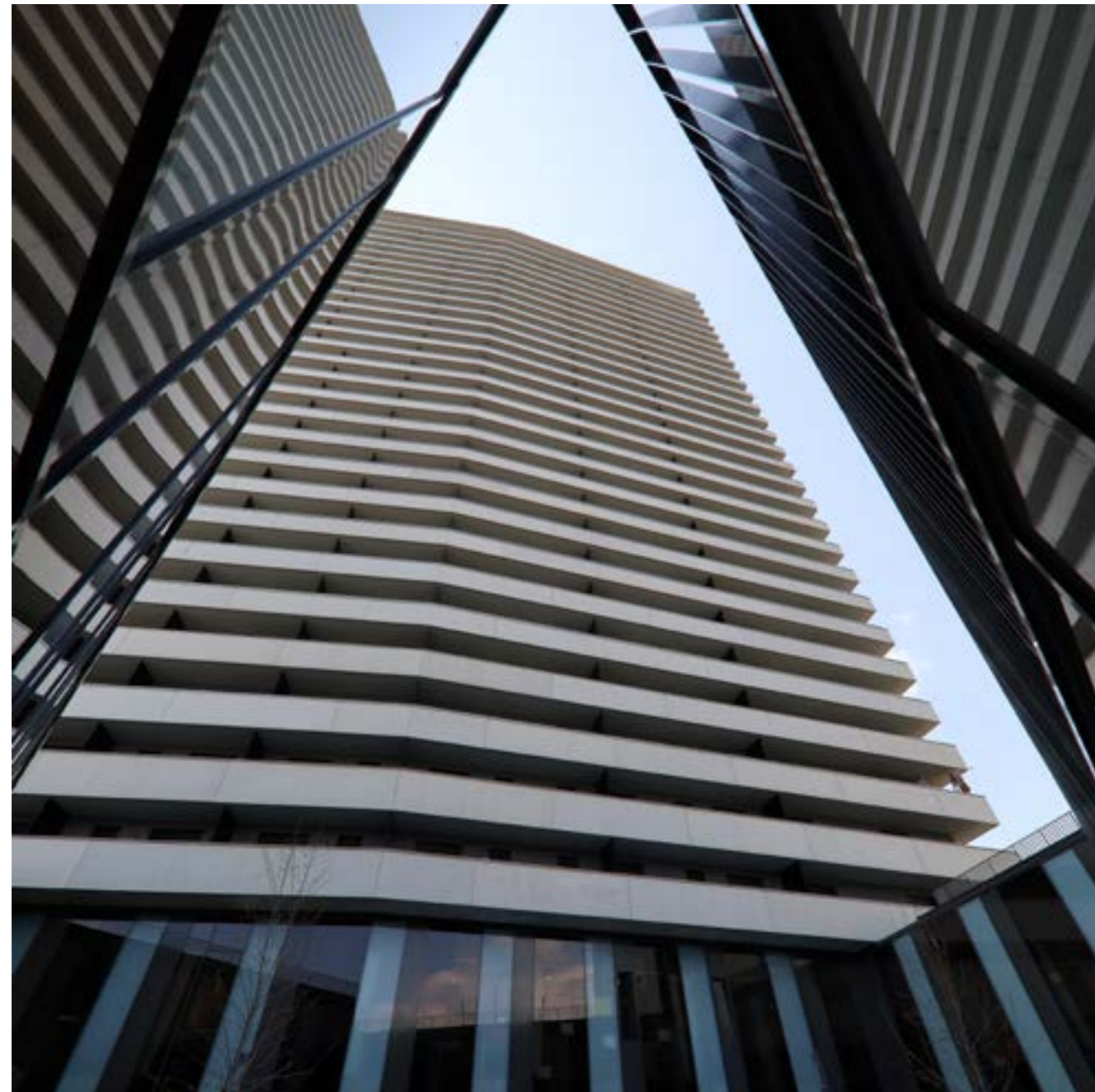
Our HABAU GROUP companies are capable of taking on even the most demanding of tasks in structural engineering. In order to implement excellent quality within very short deadlines, we rely on experienced personnel, modern technologies such as BIM and agile approaches like lean construction management. With our expertise in residential construction, industrial and commercial construction, the construction of private homes, public buildings and much more, we offer you the entire spectrum.

**01 Bruckner Tower**  
LINZ, AUSTRIA

**02 Brauquartier**  
GRAZ, AUSTRIA

**03 Adele Residential Project**  
VIENNA, AUSTRIA

# Bruckner Tower



## 01

The Bruckner Tower has provided the landscape of Linz with an architectural highlight that is visible for miles around. This high-rise, which is now the tallest in the city, takes its name from the Anton Bruckner Private University, which was previously located on these premises. The 98.6 metre-high residential tower featuring 31 floors will soon provide a modern home to many people. All 355 apartments are designed with maximum energy efficiency in mind; the construction was supported by groundbreaking Building Information Modelling (BIM).

**Company**  
HABAU

**Location**  
Linz, Austria

**Contract value**  
20 million euros

02



### 02 Brauquartier GRAZ, AUSTRIA

With the realisation of the Brauquartier Puntigam residential complex, a unique urban landscape with over 800 apartments was created in Graz's 17th city district. All the elements of the project, be it the complex itself with its eight buildings and 68,000 square metres or the connecting rooftop gardens, are designed to bring the residents together and establish a new kind of community living. ÖSTU-STETTIN played a major role in ensuring that a new living space for almost 2,500 people could be set up within a period of three years.

### 03 Adele Residential Project VIENNA, AUSTRIA

HABAU created a new living oasis for Vienna's Favoriten district. Our combined forces meant that no time frame was too tight. Close to 300 high-quality, affordable rental apartments were erected in the Sonnwendviertel district in a brief timespan: five buildings, eight days, one storey – and all of that simultaneously. In this record time, the buildings grew from the ground up. They also enclose a courtyard featuring a seamless transition to the Helmut-Zilk-Park. Architecture that sets new standards.

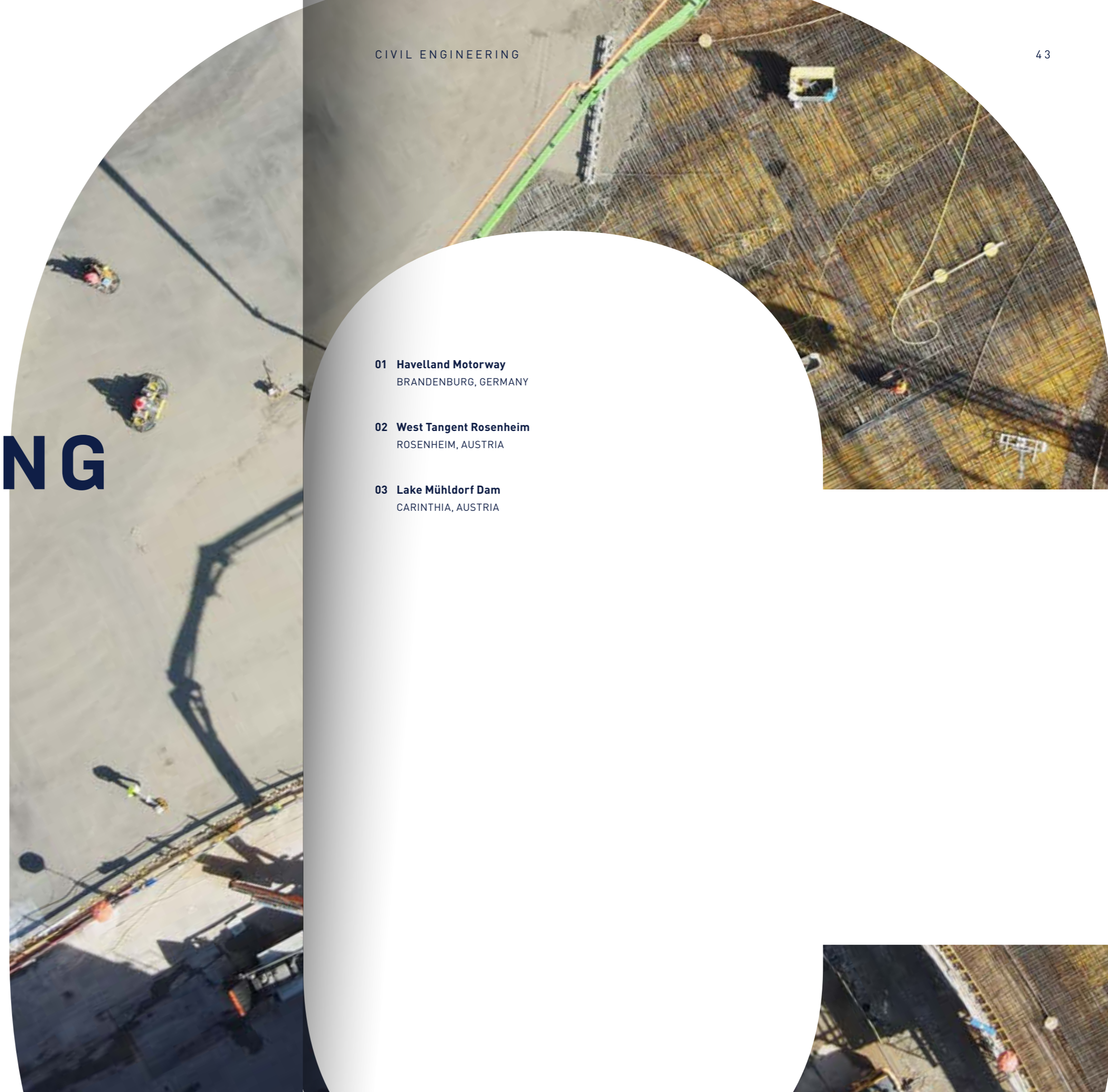
03



# CIVIL ENGINEERING

The HABAU GROUP builds reliable infrastructure, thus creating the conditions for a functioning society. We set store by individual solutions and thrive on innovation. This is how we rise to meet every challenge, e.g. in the construction of roads and bridges, airport construction, sanitary engineering and the structural concrete sector. Our promise: transparency and quality.

- 01 **Havelland Motorway**  
BRANDENBURG, GERMANY
- 02 **West Tangent Rosenheim**  
ROSENHEIM, AUSTRIA
- 03 **Lake Mühlendorf Dam**  
CARINTHIA, AUSTRIA





# Havelland Motorway

## 01

The largest contract so far in over 100 years of company history is the construction i.e. expansion of the Havelland Motorway. A project without parallel. Over approx. 30 kilometres, the motorway will be expanded to cover six lanes, and a further 30 kilometres of the existing four-lane motorway will be thoroughly renovated. A total of 38 bridges, eight junctions and four parking and toilet facilities will be newly constructed. Two petrol stations with rest stops as well as additional parking and toilet facilities will be updated or expanded. We build for the future, which is why we are also assuring the operation of this stretch of the motorway for the next 30 years. We stand for long-term quality that connects people.

**Company**  
HABAU

**Location**  
Brandenburg, Germany

**Contract value**  
1.4 billion euros



## 02 West Tangent Rosenheim

ROSENHEIM, AUSTRIA

Pure engineering ingenuity by HABAU and MCE: Together the two group companies established an 11.5 kilometre-long tangent to relieve the pressure on the city traffic in Rosenheim, in addition to a 670 metre-long bridge. A particular challenge is presented by the ground, which is barely able to support a load, for which innovative constructions using stakes sunk to 45 metres' depth in the ground were developed.



02



## 03 Lake Mühdorf Dam

CARINTHIA, AUSTRIA

At a height of 2,300 metres above the Adriatic Sea and with peak wind speeds of up to 200 kilometres per hour, the HABAU GROUP is renovating the 12,000 square metres of prefabricated elements at the Lake Mühdorf dam. This is part of the Malta-Reißeck hydroelectric power plant complex, which is one of the largest of its kind in Europe. With these demanding tasks, which in part require customised work equipment, we are making an important contribution towards creating more renewable energy.



# PIPELINE CONSTRUCTION

In the field of pipeline construction, the HABAU GROUP is a front runner. We even develop novel work equipment to achieve the best solutions. And this is why our expertise in the sectors of district heating systems, gasification systems, low pressure gas distribution systems, transport and storage systems, underground storage facilities as well as water supply systems is in demand internationally.

**01 Zeelink**  
BELGIUM AND GERMANY

**02 BRUA**  
THROUGH BULGARIA,  
ROMANIA, HUNGARY  
AND AUSTRIA

**03 EUGAL**  
FROM THE BALTIC SEA  
TO THE CZECH REPUBLIC

01

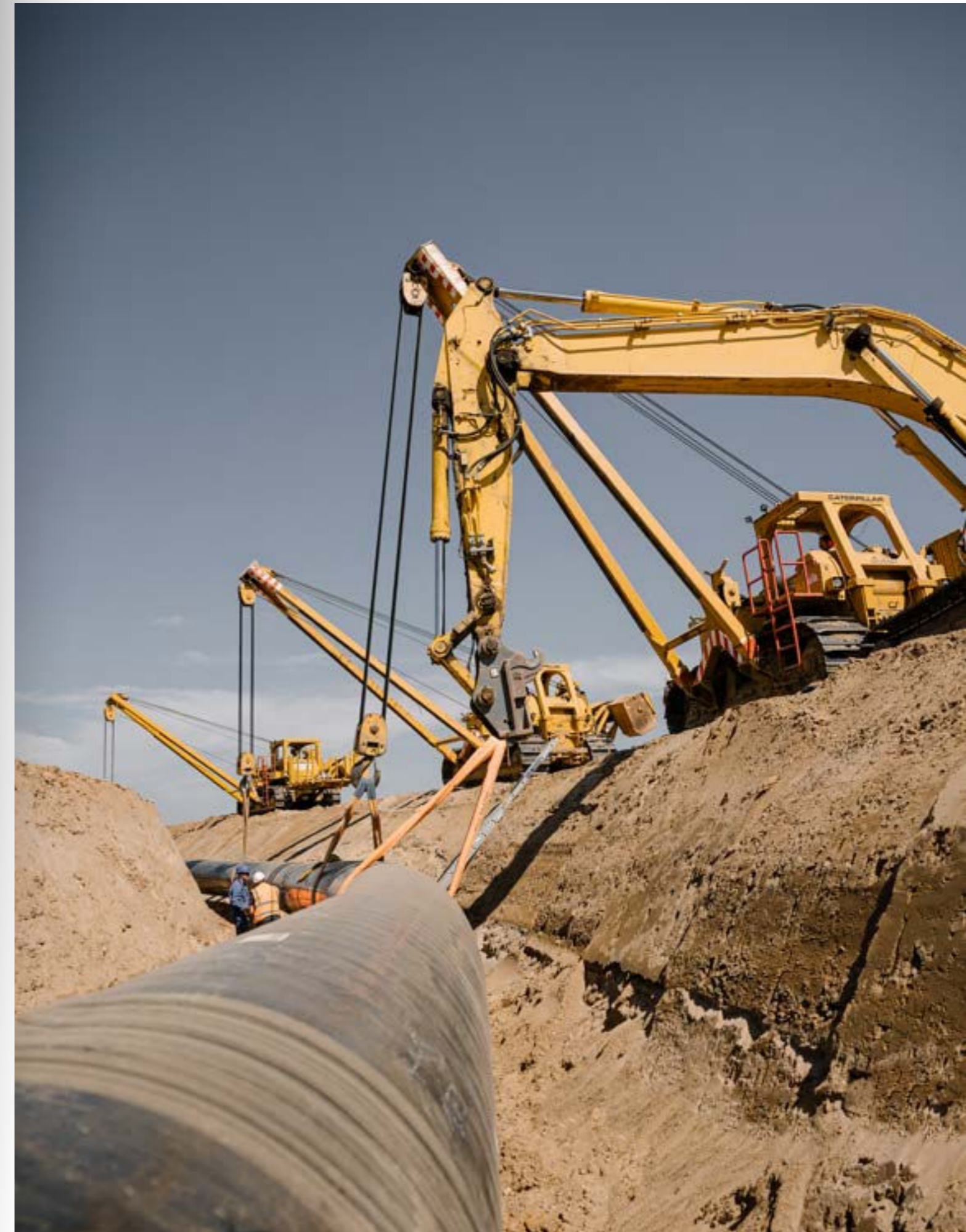
Working at high pressure. This is what is necessary in order to transport gas across 74.4 kilometres (DN 1000) from the border of Belgium and Germany towards the south. The high-pressure pipelines cross through North Rhine-Westphalia and the river Rhine. In order to attach the culvert intake of 525 meters at the entry point, this heavily frequented waterway was even "held up" for a brief period.

**Company**  
HABAU, PPS

**Location**  
Belgium and Germany

**Contract value**  
660 million euros

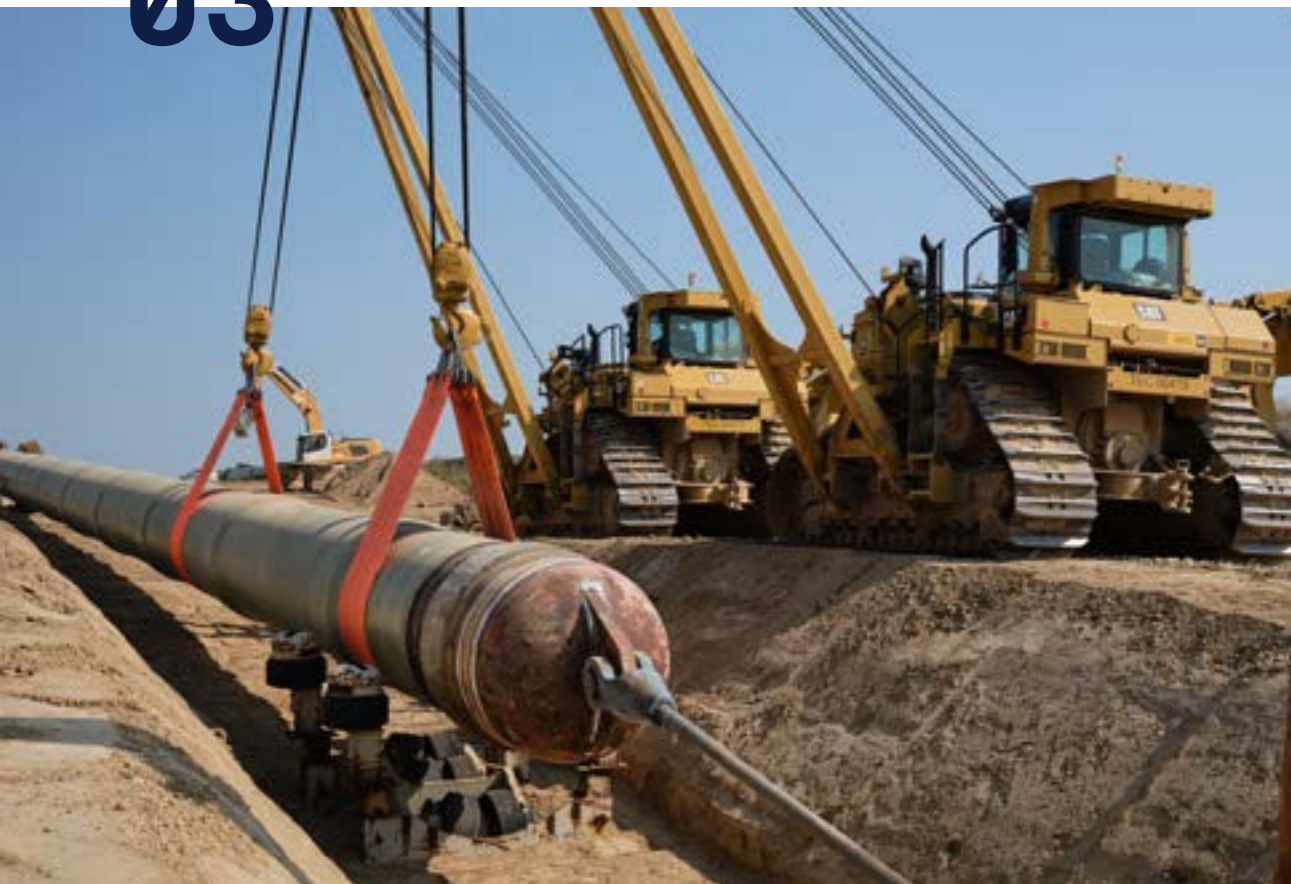
# Zeelink



**03 EUGAL**  
GERMANY AND  
CZECH REPUBLIC

EUGAL is our way of making a significant contribution to the supply of natural gas in Europe. Of a total of approx. 480 kilometres of pipeline leading from the Baltic Sea across Saxony all the way to the Czech Republic, HABAU and PPS constructed two strand with a length of 141 kilometers (70.5 kilometres of double strand at a distance of 10 meters) in DN 1400.

**03**



**02**



**02 BRUA**  
BULGARIA, ROMANIA, HUNGARY AND AUSTRIA

The "BRUA" pipeline extends across 479 kilometres through Bulgaria, Romania, Hungary and Austria. The answer of HABAU S.R.L to this landscape, which is characterised by shifting soil qualities, various environmental influences and up to 1,600 metres in height, is innovation. Our pipeline beats all the odds.

**Precision work that goes deep. Safety is always our utmost priority. With its competence, expertise and over 100 years of history, this is what the ÖSTU-STETTIN company stands for. Mining, shaft construction, conveyor technology, metro construction as well as tunnel construction – ÖSTU-STETTIN builds it all, both nationally and internationally. Since its very beginnings, the company has always developed innovative technologies for optimum solutions.**

# UNDERGROUND CONSTRUCTION OPERATIONS

- 01 **Stuttgart 21**  
STUTTGART, GERMANY
- 02 **Nant de Drance - Pressure Shafts**  
VALAIS ALPS, SWITZERLAND
- 03 **Gleinalm Tunnel, A9**  
STYRIA, AUSTRIA

# Stuttgart 21

## 01

A century of experience for a once-in-a-century mission – “Stuttgart 21”. The vision: the train station of the future.

At full capacity, the Stuttgart Central Station will be rotated and set deeper in the ground. The terminal station will be transformed into a through station. Two of the tunnels necessary for the realisation thereof come from ÖSTU-STETTIN. In total, these cover 32 kilometres. They lead through various ground conditions and below the River Neckar.

**Company**  
ÖSTU-STETTIN

**Location**  
Stuttgart, Germany

**Total tunnel length**  
32 kilometres



02



### 02 Nant de Drance - Pressure Shafts

VALAIS ALPS, SWITZERLAND

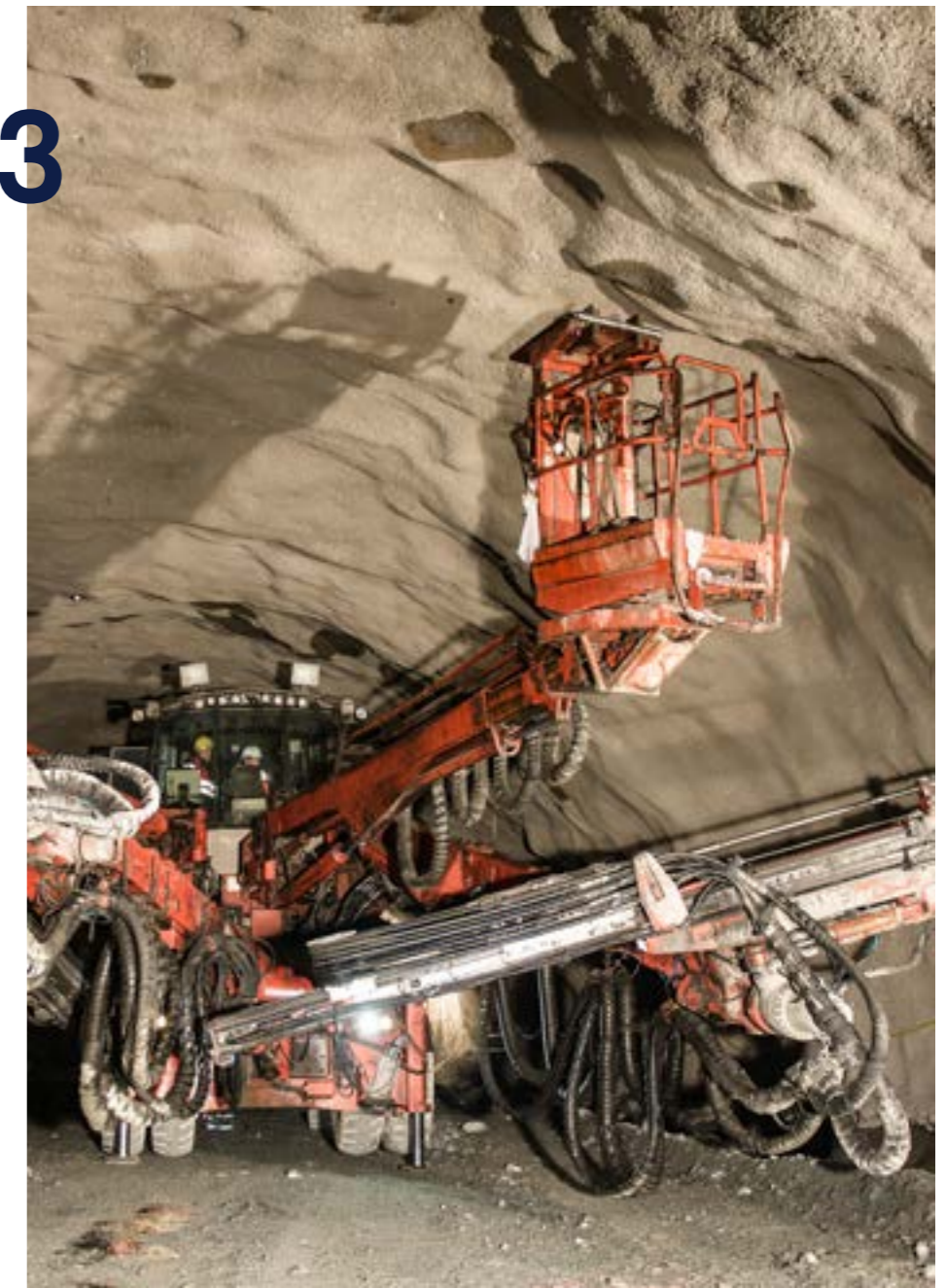
In the midst of a colossal mountain landscape at 2,140 metres above sea level, in the border area of French Switzerland with France arose one of the most innovative power plant projects in the whole of Europe – the 900 MW pumped-storage power plant Nant de Drance. The two 430 metre-deep perpendicular pressure shafts were installed by ÖSTU-STETTIN in the "ARGE Schacht NdD" shaft within two years.

### 03 Gleinalm Tunnel, A9

STYRIA, AUSTRIA

The installation of the second tube for the Gleinalm Tunnel was practically a home match for ÖSTU-STETTIN. Within just one year, the entire driving work was completed. The motorway tunnel, with a total length of 8,320 metres, connects the districts of Leoben and the greater Graz area via the A9. The installation of the second tube played a considerable role in increasing traffic safety on this vital transit route.

03



# STEEL CONSTRUCTION & STEEL PLANT CONSTRUCTION

We bring innovation from Austria to the whole world, specifically in bridge and plant construction. Our specialisation guarantees the utmost customer satisfaction for even the most complex of projects, such as assembly lines and wind tunnels or customised bridges. This is why we operate even beyond the borders of Europe, and are already paving the way for the future today.

**01 New Danube Bridge Linz**  
LINZ, AUSTRIA

**02 Airbus Assembly Facility**  
GETAFE, SPAIN

**03 BMW Research and Innovation Centre**  
MUNICH, GERMANY



# New Danube Bridge Linz



## 01

The new Danube Bridge in Linz connects more than just the two sides of the shore. It also unites functionality with aesthetics. Two lanes, spanning 400 metres in length and 33.7 metres in width, create plenty of space for all traffic participants. The suspension bridge with a composite roadway slab is distinguished by its bow-like shape, making it reminiscent of the previous railway bridge. Tradition and modernity in harmony create a new landmark for the "steel city" of Linz.

**Company**  
MCE

**Location**  
Linz, Austria

**Project period**  
2018 – 2021





02

**02 Airbus Assembly Facility**  
GETAFE, SPAIN

A precision landing for Airbus: since back in the early 2000s, MCE has been a reliable partner for the airline industry. And it has proven its worth once again with the specialist, on-time construction of assembly facilities for the fuselage of Airbus planes.

03



**03 BMW Research and Innovation Centre (FIZ)**  
MUNICH, GERMANY

Making progress together: MCE and HABAU are working together to upgrade the "FIZ" of BMW in Munich. With the help of an aero-acoustic wind tunnel and a development centre for electric cars, this is where the mobility of tomorrow is born.

# PREFABRICATED CONSTRUCTION

Be it industrial or commercial builds, bridges or underpasses, sports facilities, apartments or ceiling systems – we implement all our assignments rapidly and with top quality. What makes this possible is our ingenious carousel production and our ultra-modern machines such as the mesh welding plant. We want to exceed the currently valid standards, which is why we exclusively offer individualised, tailored solutions.

**01 Post am Rochus**  
VIENNA, AUSTRIA

**02 SALK – Car Park for LKH Salzburg Hospital**  
SALZBURG, AUSTRIA

**03 IKEA CDC Wien**  
VIENNA, AUSTRIA

# Post am Rochus

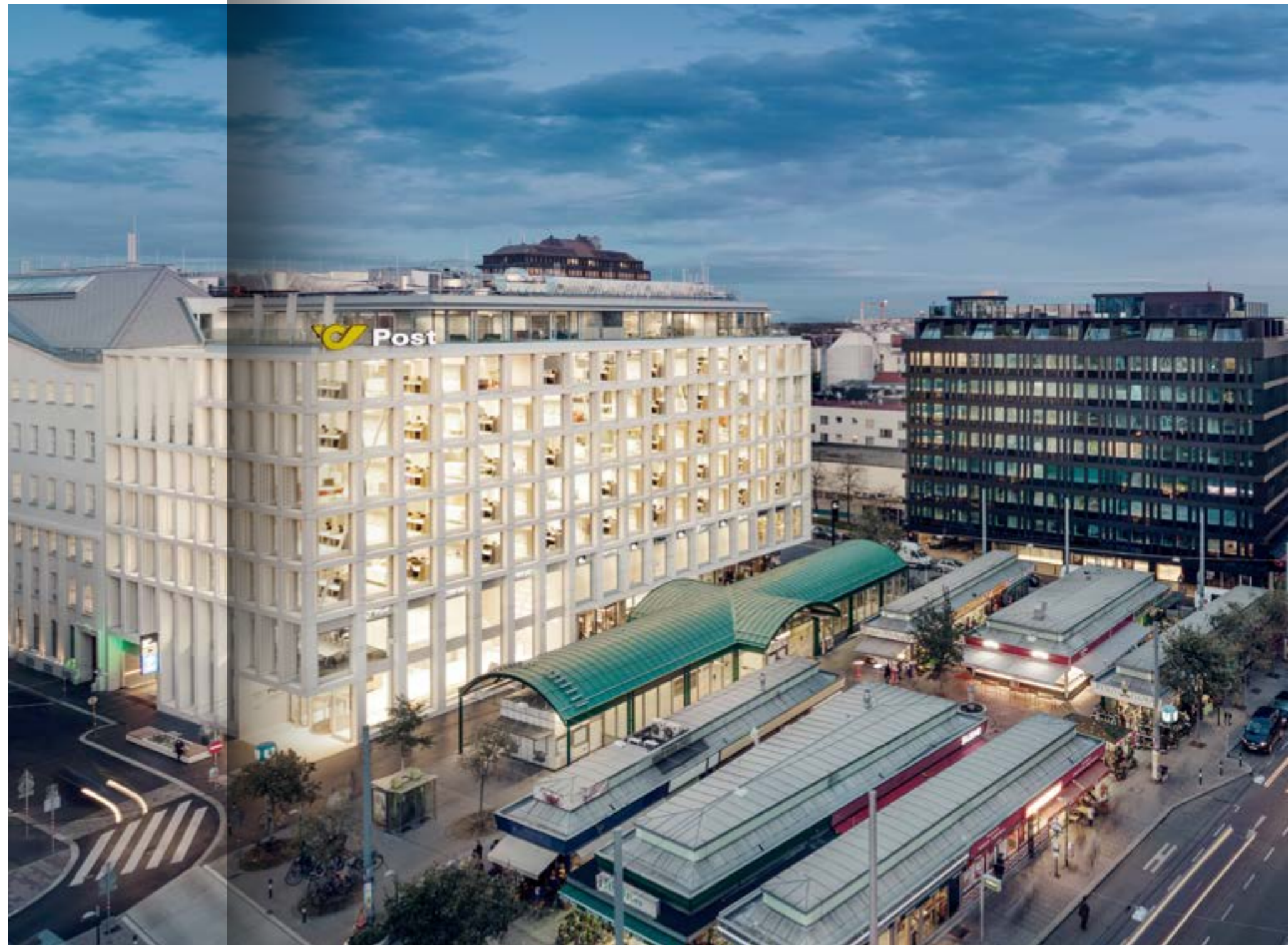
## 01

The Post am Rochus main post office shines once again in a new light, or to put it more precisely, in sandblasted concrete. The façade of this prestigious project was renovated in a span of just six months. With the help of our prefabricated parts, we brought a modern flair back to Vienna's third district.

**Company**  
HABAU

**Location**  
Vienna, Austria

**Project period**  
June 2016 – December 2016



**02 SALK – Car Park for LKH Salzburg Hospital**  
SALZBURG, AUSTRIA

At the car park of the Salzburg state hospital (LKH), ÖSTU-STETTIN has combined functionality with beauty. The façade slats showcase this combination. In part load-bearing and in part non-bearing, they are a perfect expression of sophistication. The entire construction project was implemented in just eleven months.



**02**

**03**



**03 IKEA CDC Wien**  
VIENNA, AUSTRIA

In Vienna Floridsdorf, Swedish furniture icon IKEA saw new growth with the addition of over 30,000 shelf spaces. 70 million euros were invested in this major project. The HABAU company installed approximately 2,430 tons of reinforcement, 155 tons of prestressing steel and 12,000 cubic metres of concrete. Our prefabricated parts thus now house your foundations of tomorrow.



# TIMBER CONSTRUCTION

The HABAU GROUP builds reliable infrastructure, thus creating the conditions for a functioning society. We set store by individual solutions and thrive on innovation. This is how we rise to meet every challenge, e.g. in the construction of roads and bridges, airport construction, sanitary engineering and the structural concrete sector. Our promise: transparency and quality.



**01 Diesterweggasse School**  
VIENNA, AUSTRIA

**02 Mayr Melnhof Holz**  
LEOBEN, AUSTRIA

**03 Mödling Terraced House Complex**  
MÖDLING, AUSTRIA



# Diesterweggasse School

## 01

A wooden wonderland as a school. RAIMUND BAUMGARTNER makes this possible. The skeleton construction consists of massive laminated timber elements. This is how a sustainable place of education came to exist in the Diesterweggasse in Vienna Penzing in 2018.

**Company**  
RAIMUND BAUMGARTNER

**Location**  
Vienna, Austria

**Project period**  
2018

02



**02 Mayr Melnhof Holz**  
LEOBEN, AUSTRIA

2,650 square metres of total floor area and 1,450 square metres of wooden façade make the Mayr-Melnhof Holz operations in Leoben the largest one-off project in the history of RAIMUND BAUMGARTNER. The office building was constructed in just four months – a truly record result.

03



**03 Mödling Terraced House Complex**  
MÖDLING, AUSTRIA

A contemporary and at once sophisticated terraced house complex was realised by ÖSTU-STETTIN and RAIMUND BAUMGARTNER. Over a total of 1,100 square metres, ÖSTU-STETTIN set up the structures while RAIMUND BAUMGARTNER gave the finishing touches to the façade. Larch rhombus slats were used to create a rear-ventilated wooden façade mounted at the front. We bundle our skills to ensure top performances.

As at December 2024

**Legal Notice** pursuant to § 24 Media Act **Media Owner and Publisher** HABAU Hoch- und Tiefbaugesellschaft m.b.H., Greiner Straße 63, 4320 Perg, T +43 7262 555 0, E office@habau.at, W habaugroup.com, publication pursuant to § 25 Media Act at habau.at/impressum **Design and Conception** foon.at **Text** purtscherrelations.at **Print** samsondruck.at, **Photos** p 2, p 5-7, p 18, p 21 top left, p 21 bottom right, p 24-33, p 35, p 45, p 48-51, p 54-57, p 79 – Joel Kernasenko, p 9, p 52, p 53 – HABAU Hoch- und Tiefbaugesellschaft m.b.H., p 10, p 11 – Jana Madzigon, p 17 – Alexander Schneider, p 19, p 20 bottom – MCE GmbH, p 20 top – HABAU Hoch- und Tiefbaugesellschaft m.b.H., p 20 middle – HABAU Hoch- und Tiefbaugesellschaft m.b.H., cover, p 21 top right, p 38, p 39, p 60, p 61, p 62, p 63 – Gregor Hartl, S 21 bottom left – Bengt Stiller, p 34, p 47 – Lukas Dürnegger, p 36, p 37 – HABAU Hoch- und Tiefbaugesellschaft m.b.H., p 40 – C&P Immobilien AG, p 41 – Markus Schieder, p 42, p 43 – HABAU Hoch- und Tiefbaugesellschaft m.b.H., p 44 – AlbrechtsBesteBilder, p 46 – MW Architektur fotografie, p 58, p 59 – ÖSTU-STETTIN Hoch- und Tiefbau GmbH, p 64, p 65 – MCE GmbH, p 66-68, – Bengt Stiller, p 69 – HABAU Hoch- und Tiefbaugesellschaft m.b.H., p 70 – HABAU Hoch- und Tiefbaugesellschaft m.b.H., p 71 – HABAU Hoch- und Tiefbaugesellschaft m.b.H., p 73 – Jeremy Bishop on Unsplash, p 74, p 76, p 77 – RAIMUND BAUMGARTNER GmbH





